

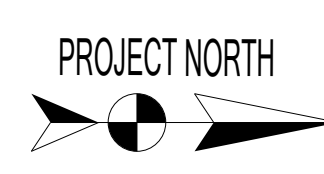
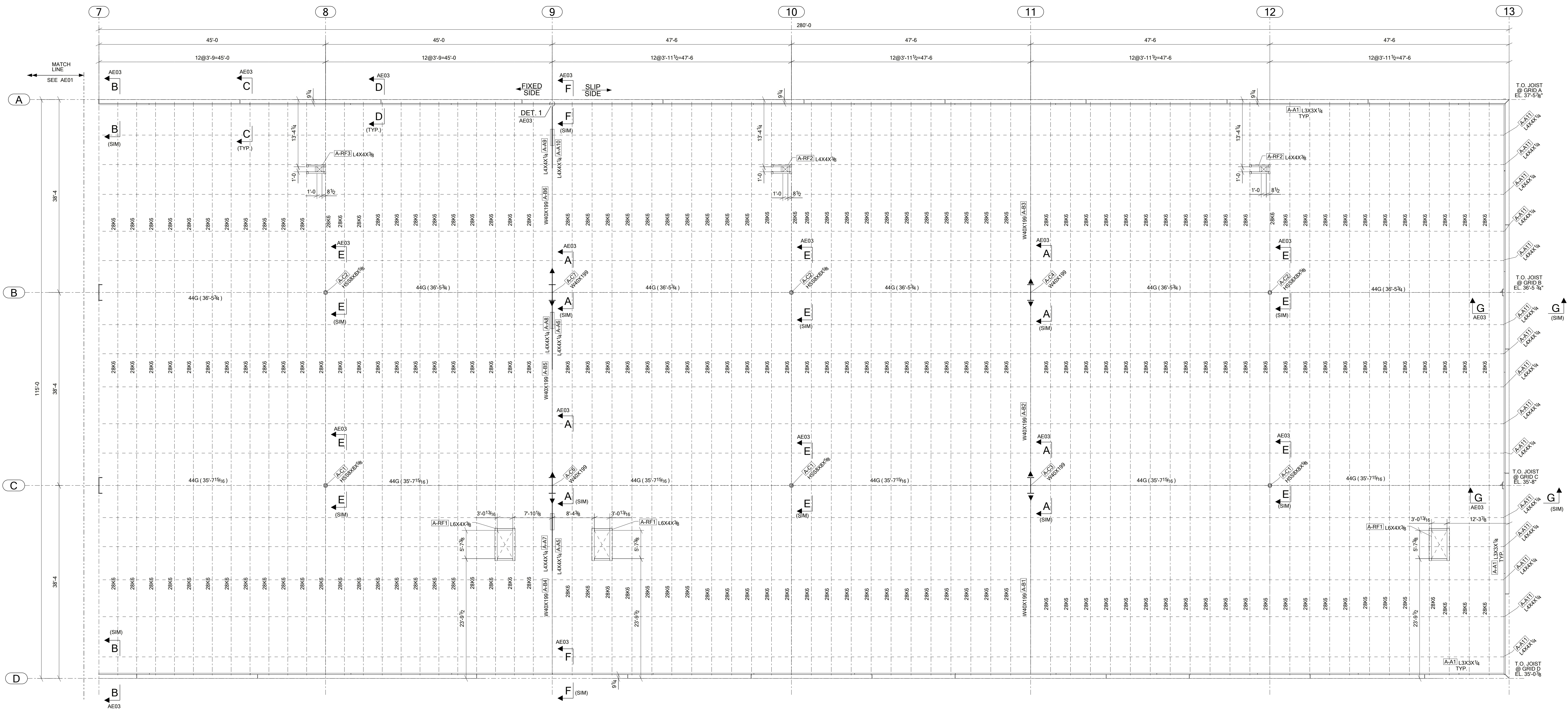
PARTIAL ROOF FRAMING PLAN (BUILDING 'A')

- 1.) FIN. FL. ELEVATION = 0'-0"
- 2.) ALL ELEVATIONS SHOWN ARE FROM FIN. FL.
- 3.) INDICATES MOMENT CONNECTION.
- 4.) SEE A-E03 FOR TYP. JOIST CONNECTION & SECTION DETAILS.



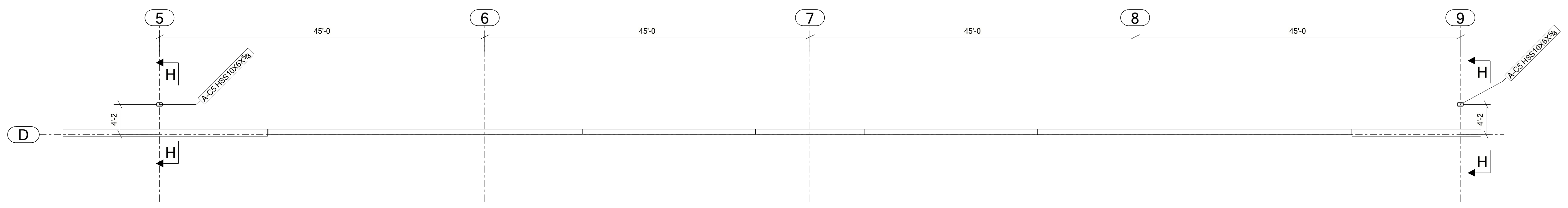
DWG. ISSUE		REVISIONS		ROL TO (L&D)	HOLE TO (L&D)	STEEL ASTM (WF)	HSS (ASTM)	PARTS (ASTM)
DATE	PURPOSE	NO.	DATE	DESCRIPTION	A325	A572 GR 50 OR A992	A500-GR.B	A36
02/17/2021	FOR APVL	A	02/17/2021	APVL	U.N.O.	U.N.O.	U.N.O.	U.N.O.
05/26/2021	FOR P.L. USE	B	05/26/2021	P.L. USE	U.N.O.	U.N.O.	U.N.O.	U.N.O.
		C						
		D						
		E						
		F						
		G						
		H						
		I						
		J						
		K						
		L						
		M						
		N						
		O						
		P						
		Q						
		R						
		S						
		T						
		U						
		V						
		W						
		X						
		Y						
		Z						

CUSTOMER:	SHOP STD. GRAY	FINISH:	SSPC-SP2	DRY FILM THICKNESS:	1.5-2.0 MILS
PROJECT:	CHAC UNITED SAMPLE DRAWING	WELDING:	E70XX-LH	PAINT STRIPE:	
ADDRESS:		WELDING:		PAINT STRIPE:	
DRAWN BY:		CHECKED BY:			
		SHEET NO:			



PARTIAL ROOF FRAMING PLAN (BUILDING 'A')

- 1.) FIN. FL. ELEVATION = 0'-0"
- 2.) ALL ELEVATIONS SHOWN ARE FROM FIN. FL.
- 3.) ▲ INDICATES MOMENT CONNECTION.
- 4.) SEE A-E03 FOR TYP. JOIST CONNECTION & SECTION DETAILS.

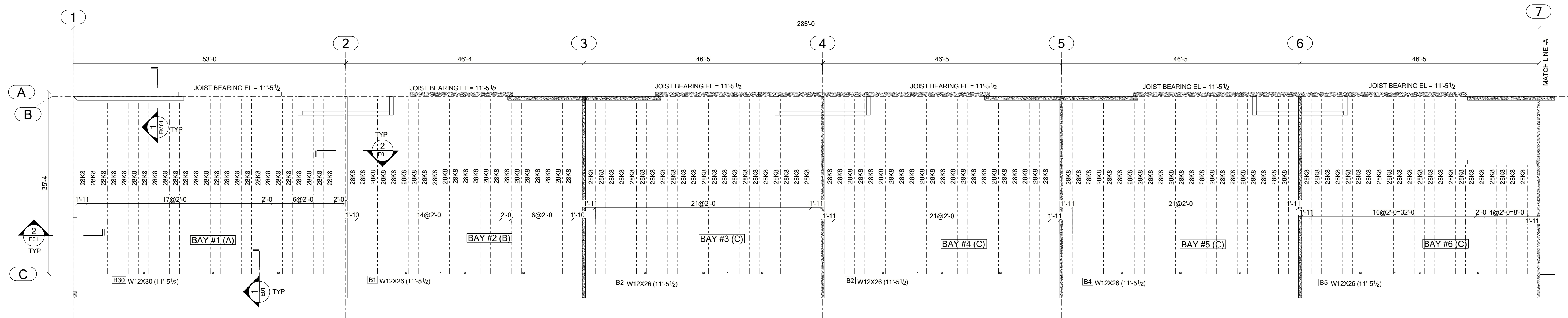


COLUMN PLAN (BUILDING 'A')

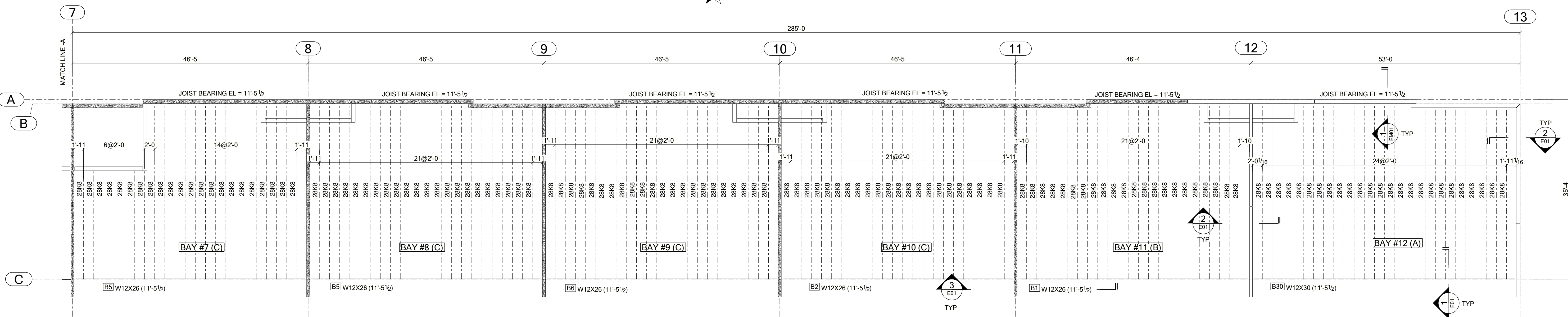


DWG. ISSUE		REVISIONS		ROL TO (L&D)	HOLS (L&D)	STEEL (ASTM (WF))	HSS (ASTM)	PARTS (ASTM)
DATE	PURPOSE	NO.	DATE	DESCRIPTION	A325	A572 GR 50 OR A992	A500-GR.B	A36
02/17/2021	FOR APVL	A	02/17/2021	APVL	U.N.O	U.N.O	U.N.O	U.N.O
05/26/2021	FOR P.L. USE	B	05/26/2021	P.L. USE	U.N.O	U.N.O	U.N.O	U.N.O

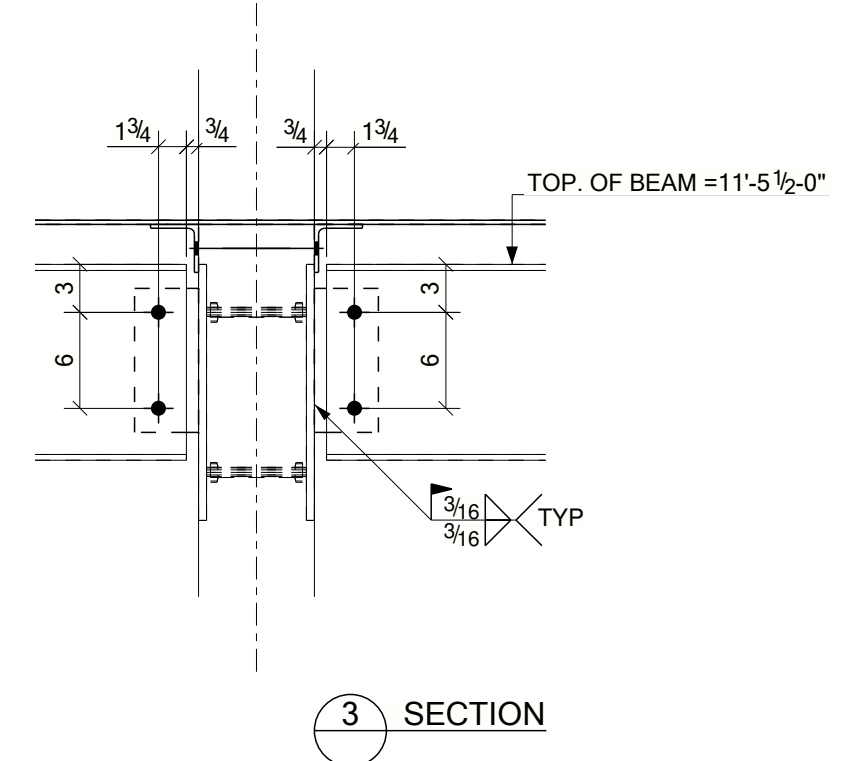
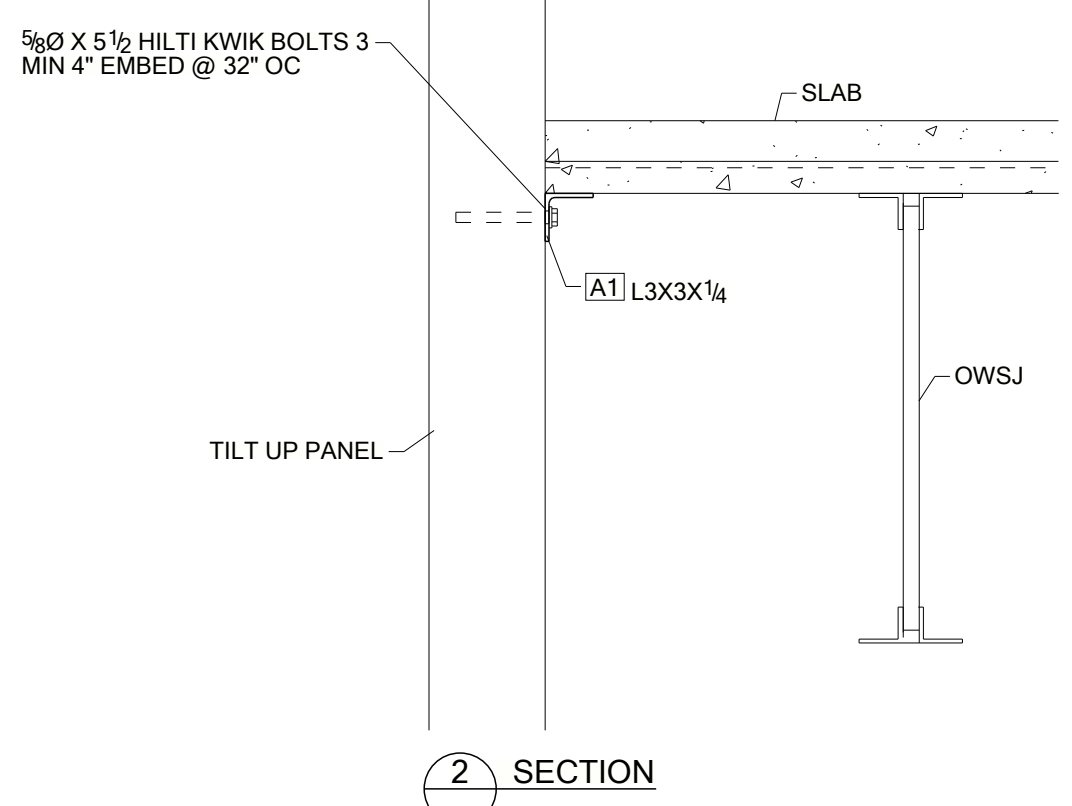
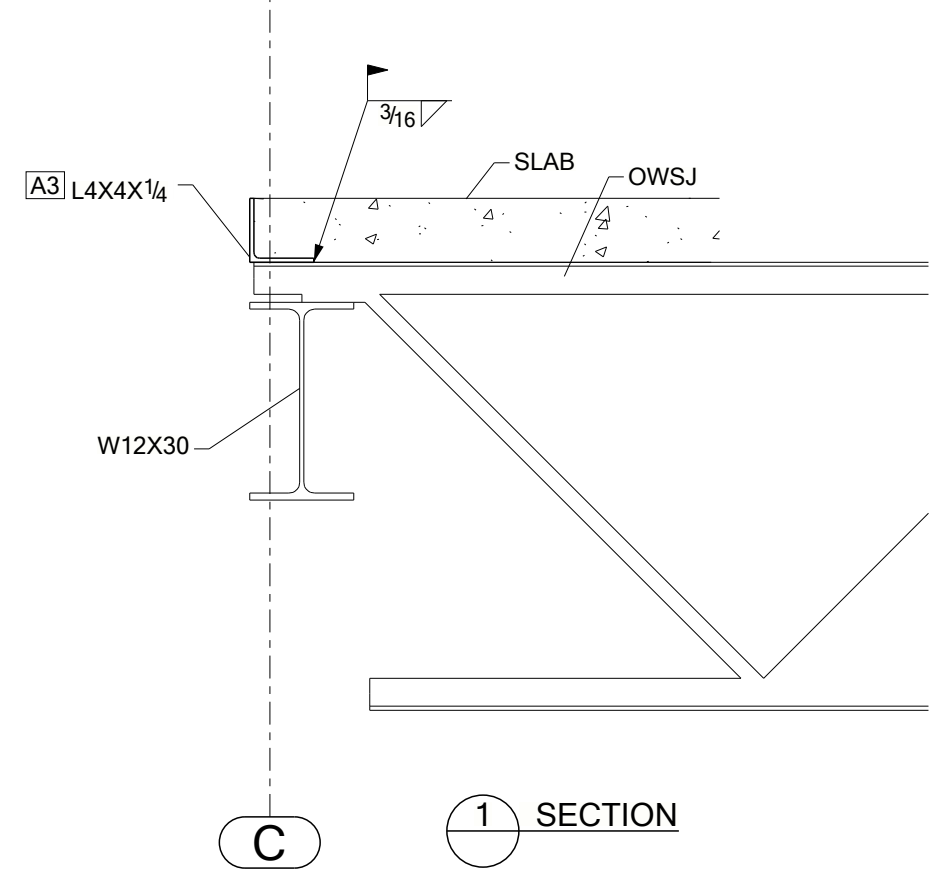
CUSTOMER:	SHOP STD. GRAY	FINISH:	SSPC-SP2	DRY FILM THICKNESS:	1.5-2.0 MILS
PROJECT:	CHAC UNITED SAMPLE DRAWING	WELDING:	E70XX-LH	PAINT STRIPE:	
DRAWN BY:		CHECKED BY:		SHEET NO:	




MEZZANINE FRAMING PLAN
 1.) FIN. FL. ELEVATION = 0'-0"
 2.) ALL ELEVATIONS SHOWN ARE FROM FIN. FL.

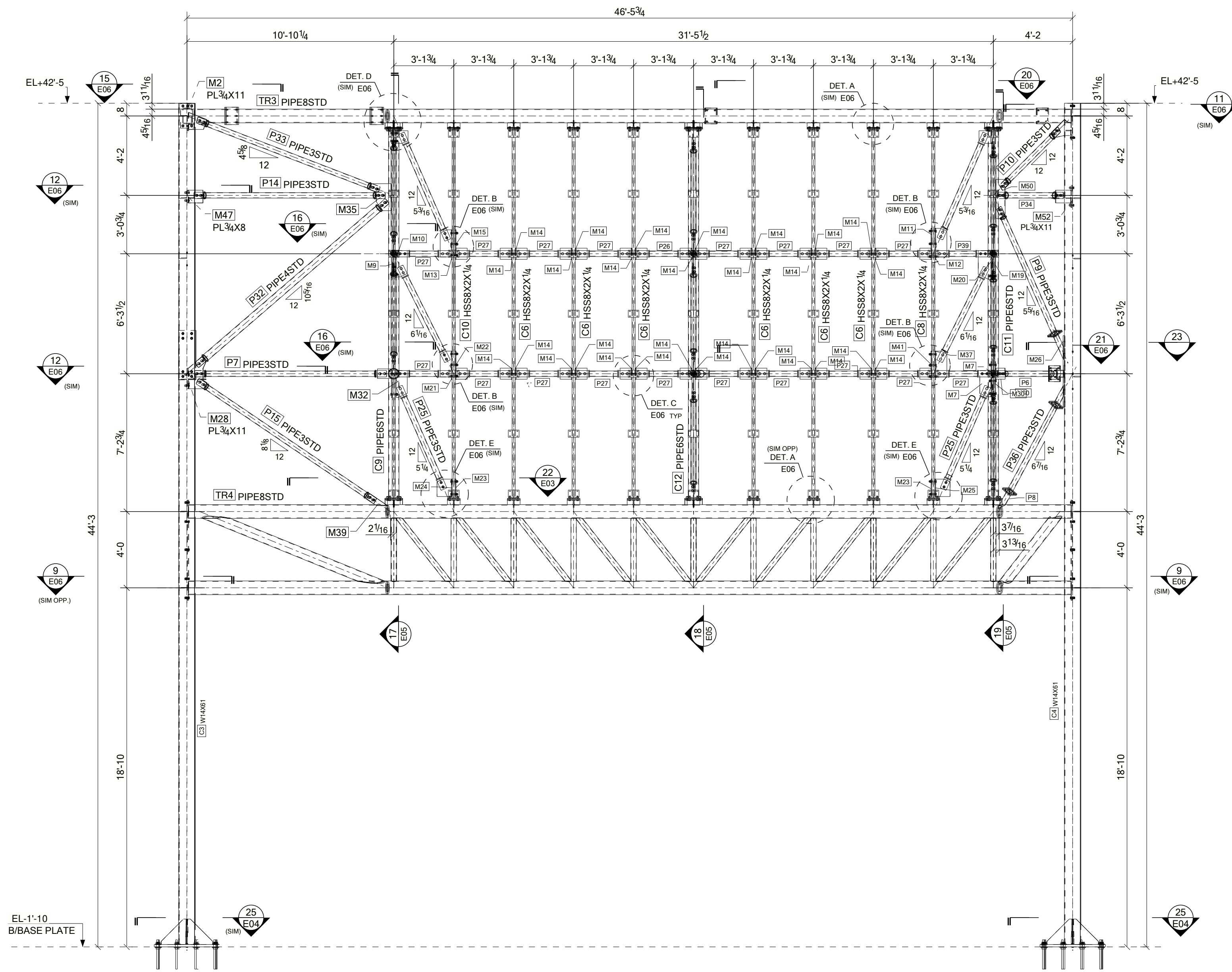



MEZZANINE FRAMING PLAN
 1.) FIN. FL. ELEVATION = 0'-0"
 2.) ALL ELEVATIONS SHOWN ARE FROM FIN. FL.

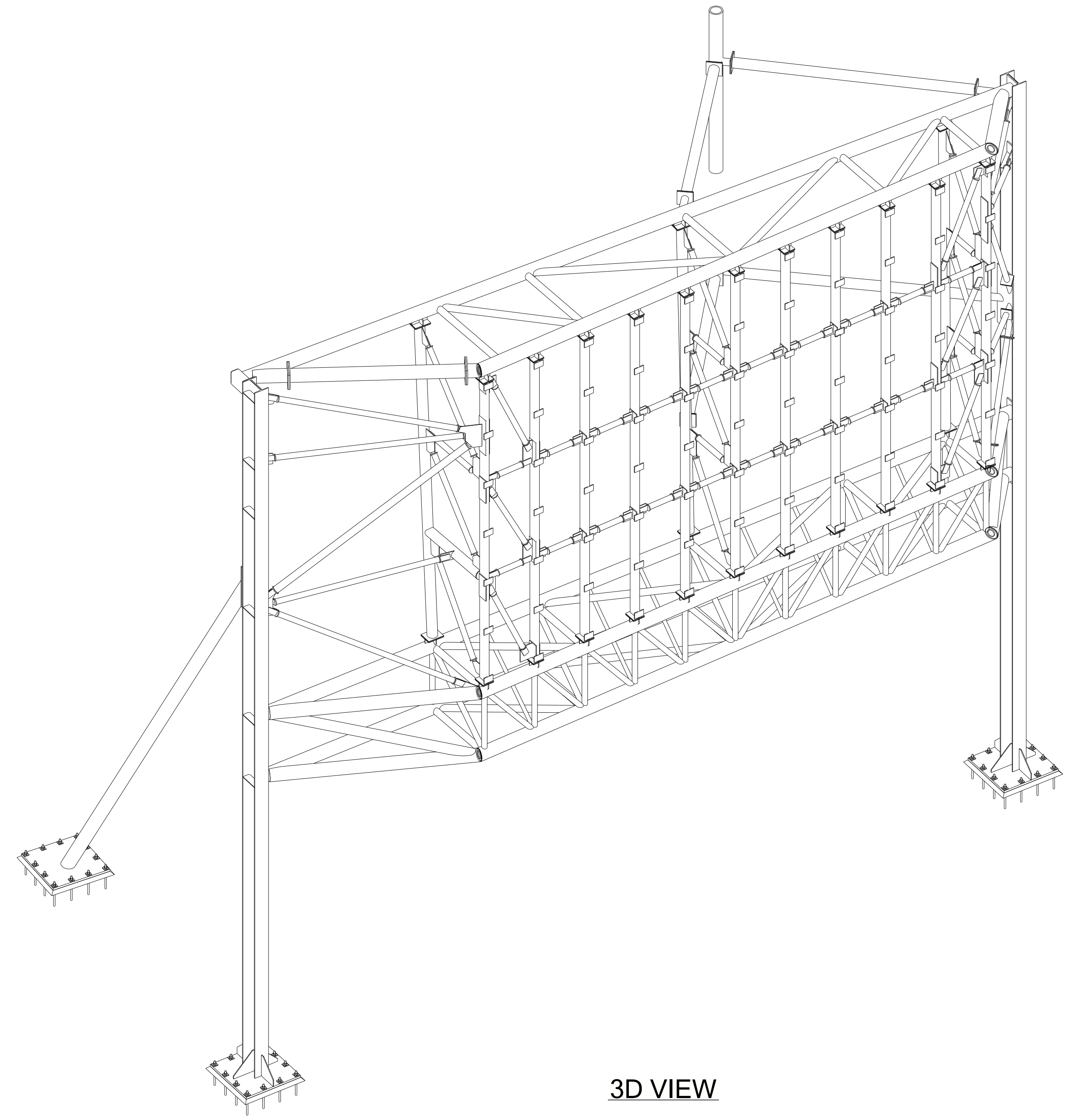


DWG. ISSUE		REVISIONS	
DATE	PURPOSE	NO.	DESCRIPTION
04/09/2021	FOR APVL	A	APVL
		△	
		△	
		△	
		△	
		△	
		△	

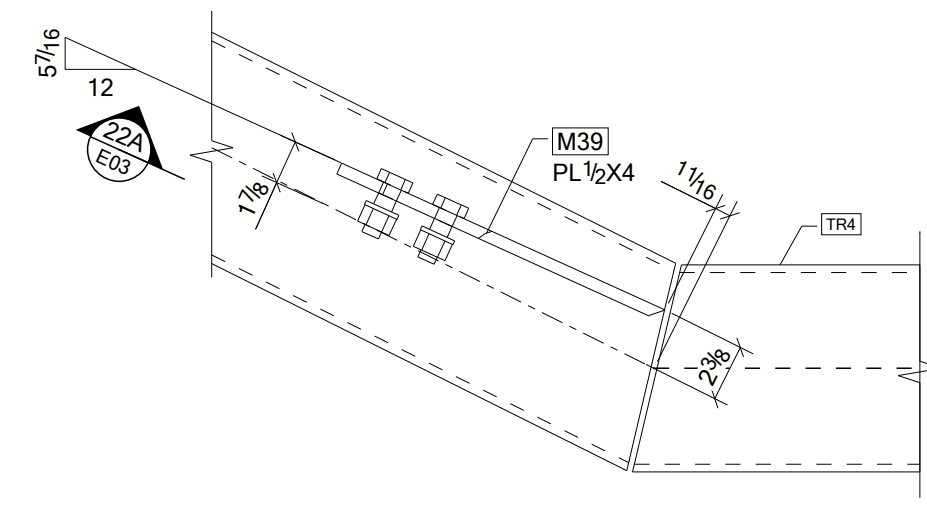
FINISH:	SHOP STD. GRAY	SURFACE PREP:	SSPC-SP2	DRY FILM THICKNESS:	1.5-2.0 MILS
CUSTOMER:		UNQ.		UNQ.	
PROJECT:	CHAC UNITED SAMPLE DRAWING				
ADDRESS:					
DRAWN BY:		CHECKED BY:			
JOB NO:		SHEET NO:			



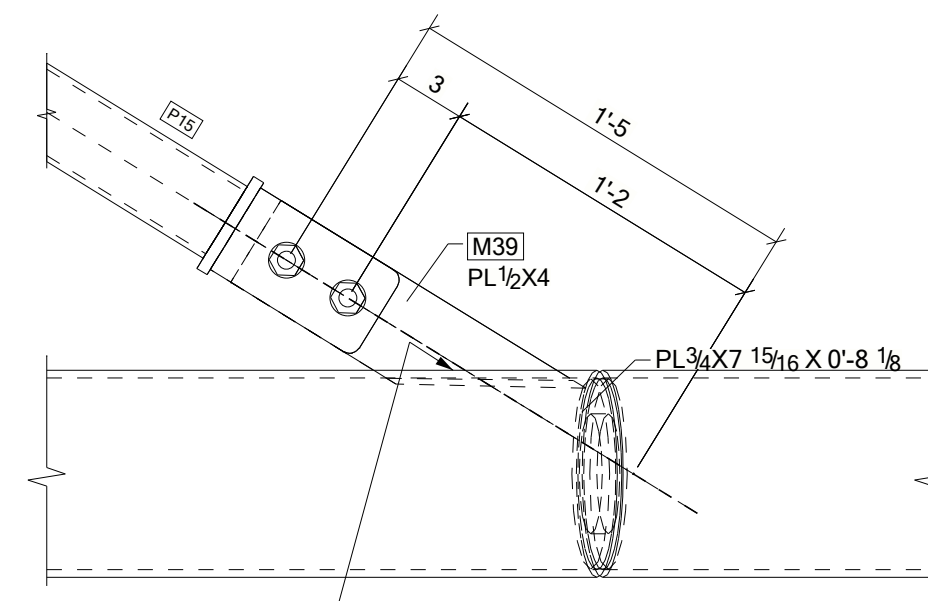
2 SECTION
E01



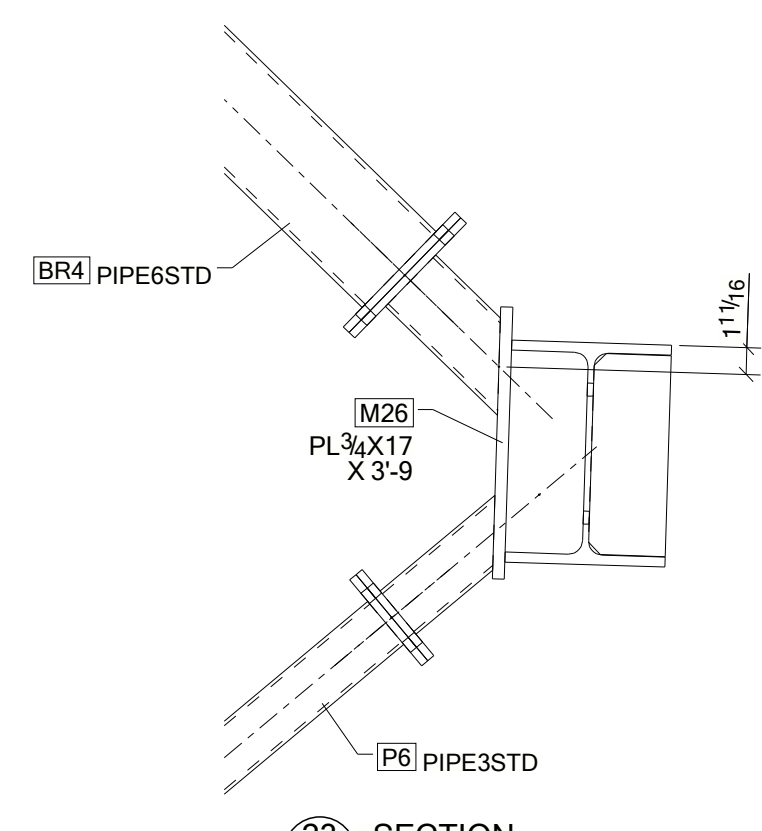
3D VIEW



22 SECTION



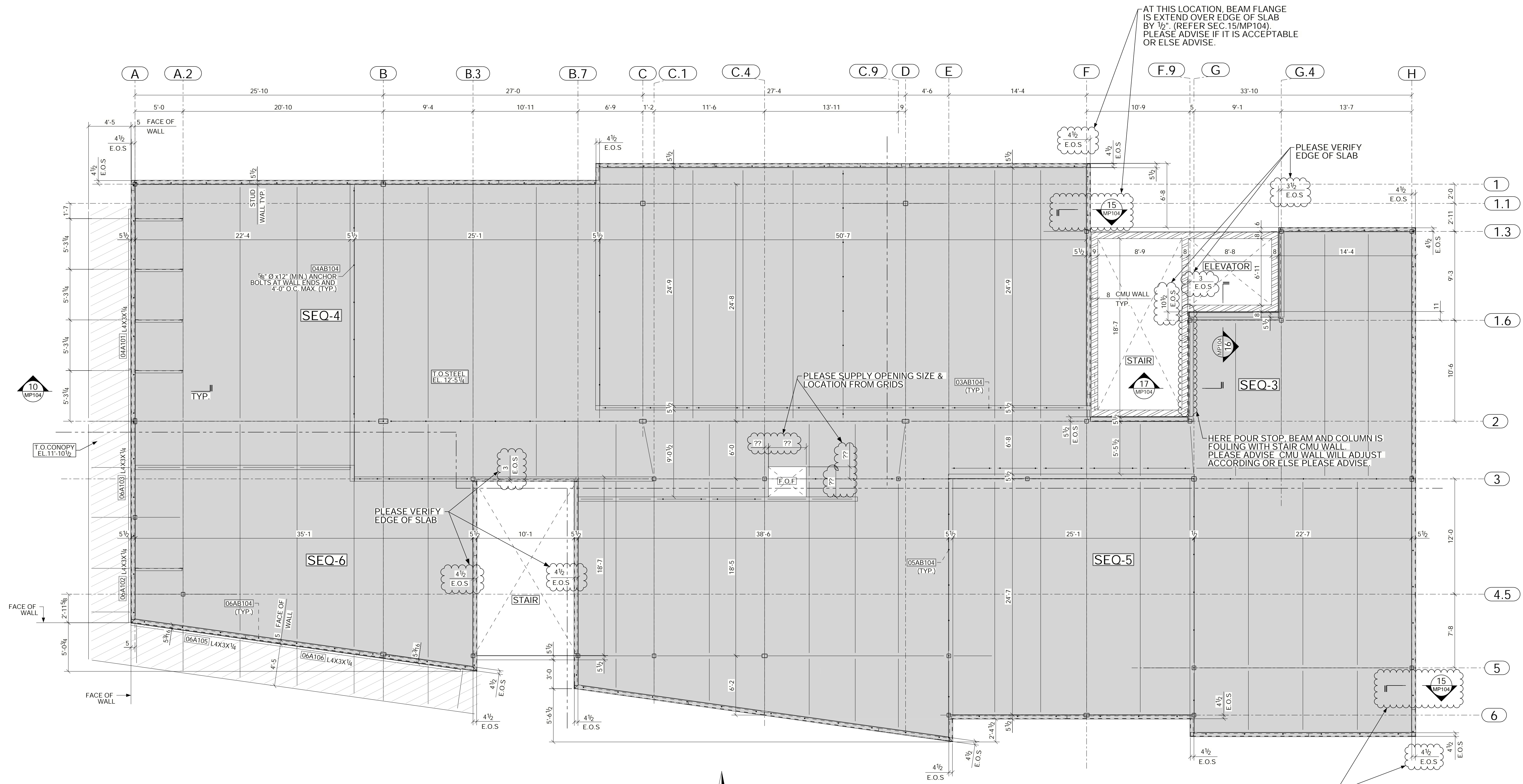
22A SECTION



23 SECTION



DWG. ISSUE		REVISIONS		BOLTS (UNO)	HOLES (UNO)	STEEL ASTM (WF)	HSS (ASTM)	PARTS (ASTM)
DATE	PURPOSE	NO.	DATE	A325	13/4"	A572 GR 50 OR A992	A500-GR.B	A36
04/16/2021	APVL	A	04/16/2021	UNO	UNO			UNO
06/04/2021	FOR 2ND APVL	B	06/04/2021	FINISH: SHOP STD. GRAY		SURFACE PREP: SSSP-SP2		DRY FILM THICKNESS: 1.5-2.0 MILS
				CUSTOMER: UNO		UNO		WELDING: E70XX-LH
				PROJECT: CHAC UNITED SAMPLE DRAWING				
				ADDRESS:				
				DRAWN BY:		CHECKED BY:		
						SHEET NO:		



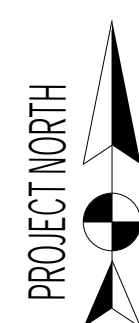
AT THIS LOCATION, BEAM FLANGE IS EXTEND OVER EDGE OF SLAB BY 1/2". (REFER SEC.15/MP104). PLEASE ADVISE IF IT IS ACCEPTABLE OR ELSE ADVISE.

PLEASE VERIFY EDGE OF SLAB

PLEASE SUPPLY OPENING SIZE & LOCATION FROM GRIDS

HERE POUR STOP BEAM AND COLUMN IS FOULING WITH STAIR CMU WALL. PLEASE ADVISE CMU WALL WILL ADJUST ACCORDING OR ELSE PLEASE ADVISE.

AT THIS LOCATION BETWEEN GRID 3 TO 6, BEAM FLANGE IS EXTEND OVER EDGE OF SLAB BY 1/2". (REFER SEC.15/MP104). PLEASE ADVISE IF IT IS ACCEPTABLE OR ELSE ADVISE.

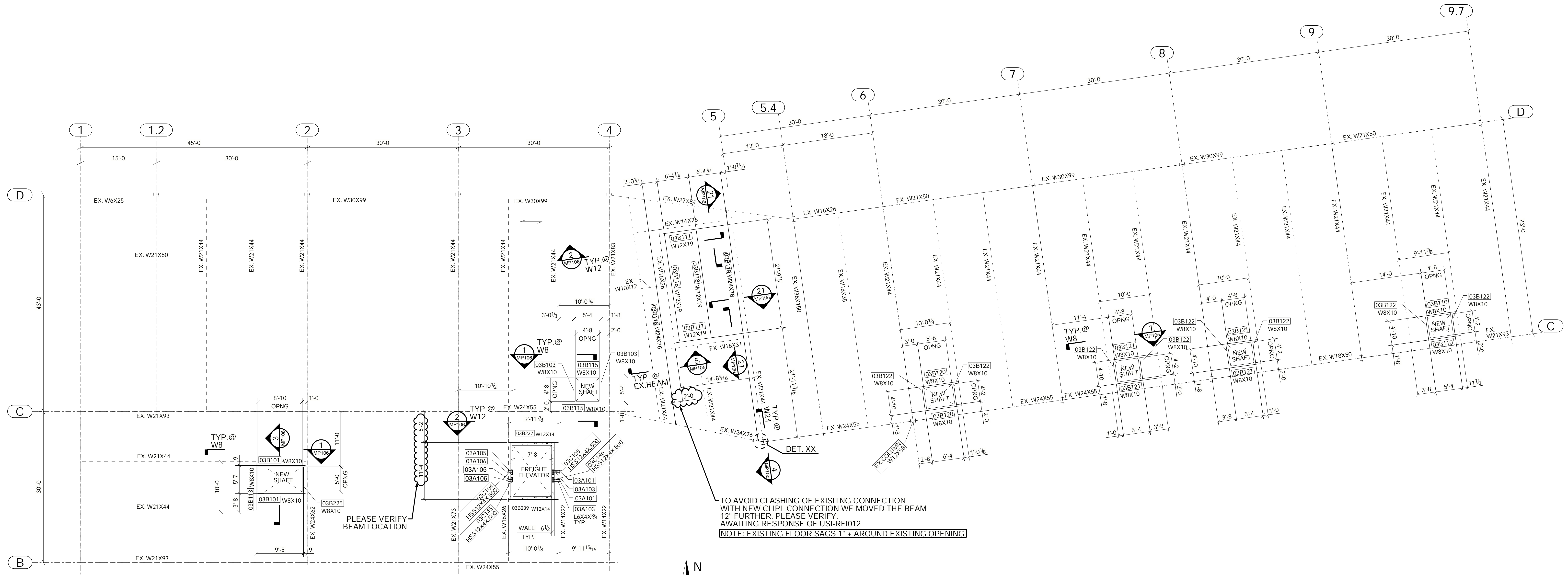


PARTIAL SECOND FLOOR EDGE OF SLAB PLAN
 1. TOP OF STEEL EL. 12'-5 1/4" (U.N.O)
 2. TOP OF SLAB EL. 13'-0" (U.N.O)



DWG. ISSUE		REVISIONS		BOLTS (Q/NO)	HILES (Q/NO)	STEEL ASTM (WF)	HSS (ASTM)	PARTS (ASTM)
DATE	PURPOSE	NO.	DATE	DESCRIPTION	A325 U.N.O	13/16"Ø U.N.O	A572 GR 50 OR A992	A500-GR.C
		▲						
		▲						
		▲						
		▲						
		▲						
		▲						
		▲						
		▲						
		▲						
		▲						

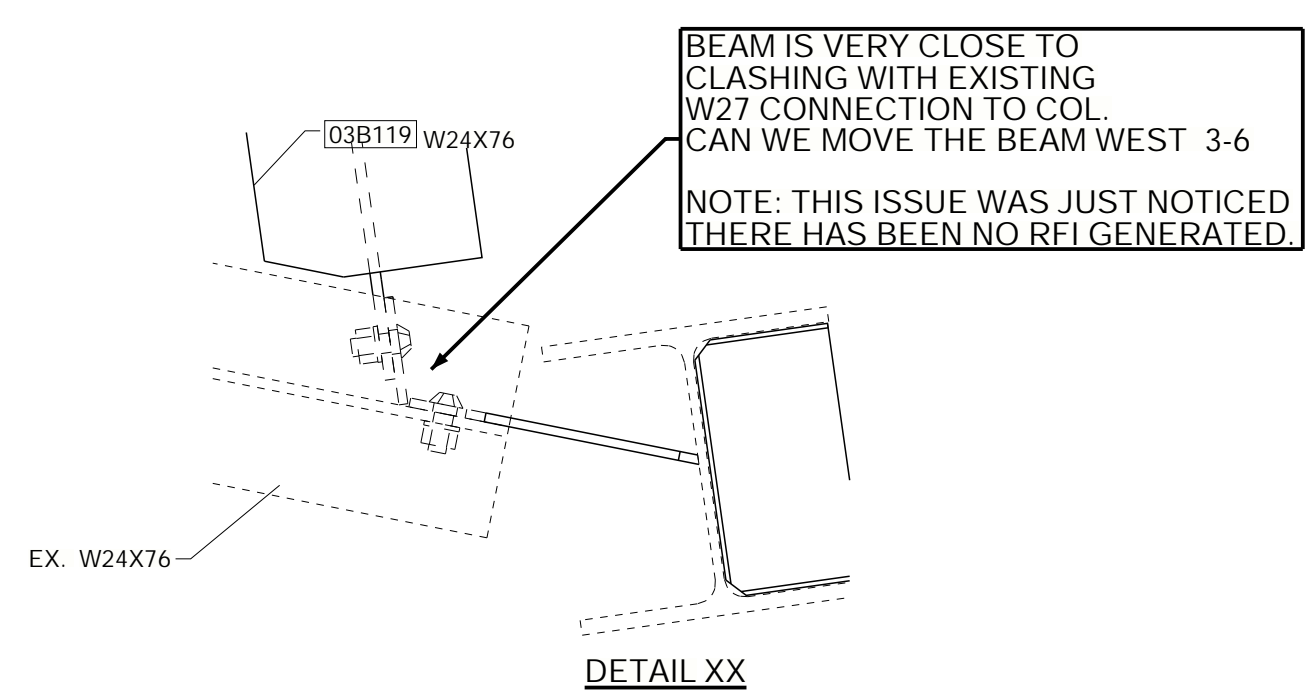
FINISH:	NO PAINT	SURFACE PREP:	DRY FILM THICKNESS:
CUSTOMER:	UN.O.	SSPC-SP2 UN.O.	1.5-2.0 MILS UN.O.
PROJECT:	CHAC UNITED SAMPLE DRAWING		
ADDRESS:			
DRAWN BY:		CHECKED BY:	
JOB NO:		SHEET NO:	



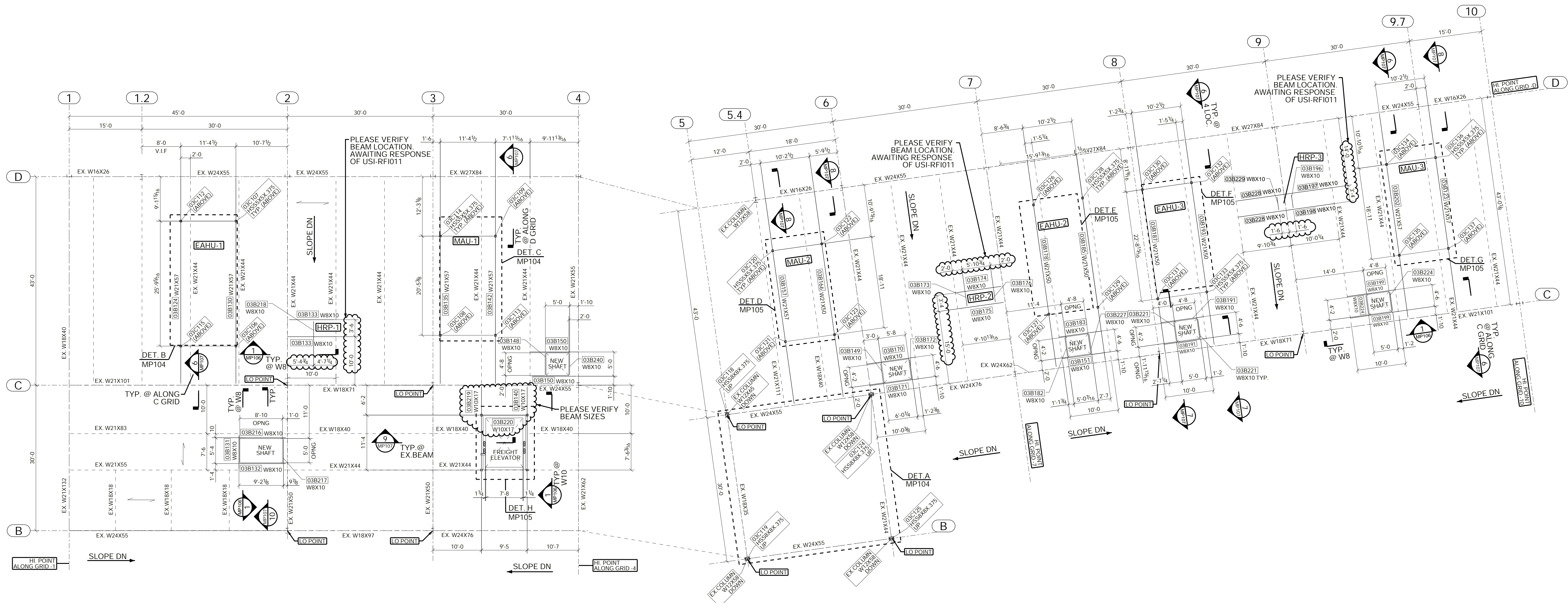
TO AVOID CLASHING OF EXISTING CONNECTION WITH NEW CLIPL CONNECTION WE MOVED THE BEAM 12" FURTHER. PLEASE VERIFY. AWAITING RESPONSE OF USI-RF1012
 NOTE: EXISTING FLOOR SAGS 1" + AROUND EXISTING OPENING

THIRD FLOOR FRAMING PLAN

- 1) TOP OF STEEL = U/S OF EXISTING SLAB
2. ALL CONNECTION BOLTS ARE 3/4" Ø A325_TC BOLTS (U.N.O)



BOLTS (U.N.O) A325 U.N.O	HOLES (U.N.O) 13/16" Ø U.N.O	STEEL ASTM (WF) A572 GR 50 OR A992	HSS (ASTM) A500-GR.C	PARTS (ASTM) A36 U.N.O
FINISH: NO PAINT		SURFACE PREP: SSPC-SP2		DRY FILM THICKNESS 1.5-2.0 MILS
CUSTOMER: U.N.O		WELDING: RD = REF. PT FOR RD'S		WELDING: E70XX-LH
PROJECT: CHAC UNITED SAMPLE DRAWING				
DRAWN BY:		CHECKED BY:		
JOB NO:		SHEET NO:		



ROOF FRAMING PLAN
 1. TOP OF STEEL = U/S OF EXISTING ROOF DECK.
 2. T.O.S @ LO. POINT = T.O.S @ HI. POINT - 12".
 3. ALL CONNECTION BOLTS ARE 3/4" Ø A325N_TC BOLTS (U.N.O.)



DWG. ISSUE	REVISIONS			
DATE	PURPOSE	NO.	DATE	DESCRIPTION
03/30/2022	FOR APVL	A	03/30/2022	APVL
04/22/2022	FOR 2ND APVL	B	04/22/2022	2ND APVL

BOLTS (UNO)	A325	HOLES (UNO)	13/16" Ø	STEEL (ASTM)	A572 GR 50 OR A992	HSS (ASTM)	A500-GR.C	PARTS (ASTM)	A36
FINISH:	NO PAINT	SURFACE PREP:	SSPC-SP2	DRY FILM THICKNESS:	1.5-2.0 MILS	WELDING:	E70XX-LH		
CUSTOMER:	U.N.O.	PROJECT:	CHAC UNITED SAMPLE DRAWING						
DRAWN BY:		CHECKED BY:							
JOB NO.:		SHEET NO.:							

